

TWIN[®]

Big Volume Gun

for Travellers, Solid Set and Pivots



- excellent performance
- versatile in its application
- easy to use
- slow reverse operation
- variable trajectory angle
- heavy duty construction
- maintenance free



komet[®]

TWIN[®]

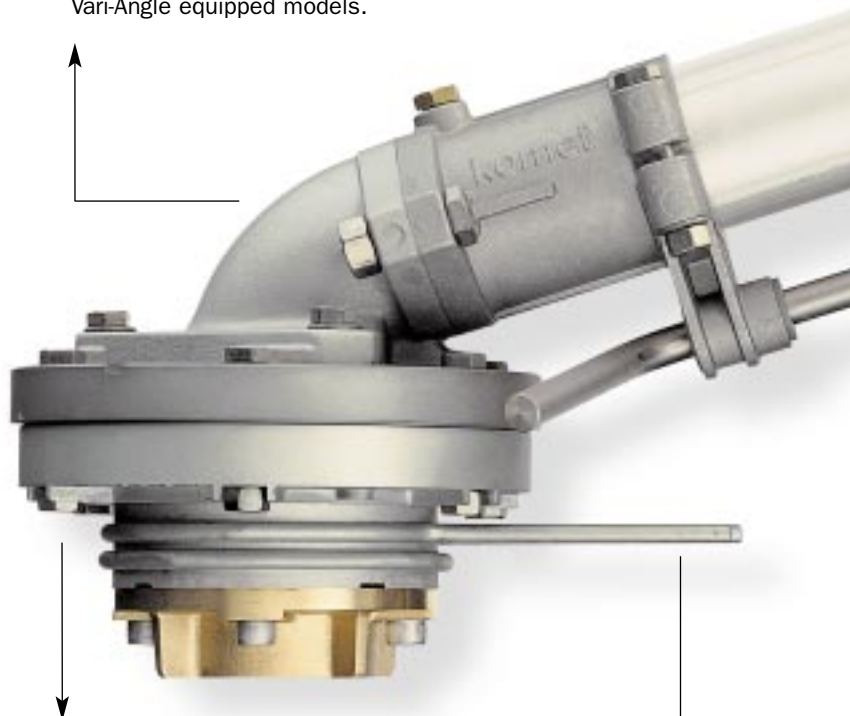
The Twin big volume sprinkler is the result of decades of research, development and innovation in irrigation products. The unique operational advantages, combined with high quality manufacturing standards make the Twin the finest big volume gun available.

The Twin represents the state of the art in big volume sprinkler technology and sets new standards in performance, ease of use, variety of applications and low maintenance. There is no other gun with comparable versatility. Heavy duty construction, high quality materials and innovative design, make the Twin reliable and maintenance free. The Twin is easy to operate and requires no adjustments to achieve optimal performance. All adjustments are automatic. The superior performance of the Twin makes it equally suitable for any irrigation system. Komet has a specially designed range of big volume sprinklers for industrial and environmental applications. Please feel free to contact us for more information.



① Vari-Angle = variable trajectory angle

Increases the efficiency of irrigation in windy conditions. The trajectory is adjustable on the Vari-Angle equipped models.



② Automatic brake system

Maintenance free. Self-adjusts to the necessary brake force according to the system pressure. No adjustments are needed at pressure variations.



3 Dynamic intermittent jet-breaker (optional)

Allows to optimize the distribution profile of the gun in all applications over the entire pressure range.

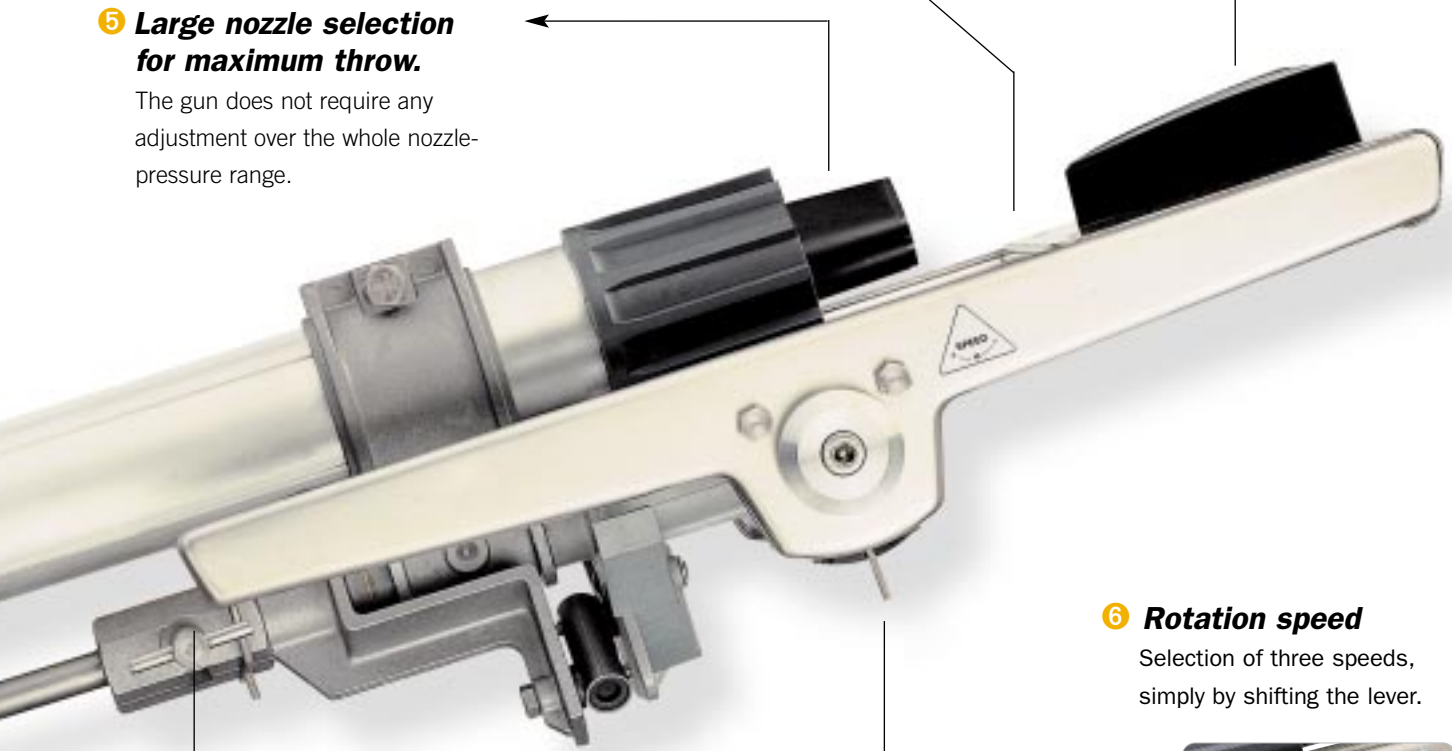


5 Large nozzle selection for maximum throw.

The gun does not require any adjustment over the whole nozzle-pressure range.

4 Drive System

For self-adjusting operation with excellent performance and equal rotation speed in both directions. This innovative system gives the gun its smooth and steady operation, resulting in reduced vibration and stress on irrigation systems.



6 Rotation speed

Selection of three speeds, simply by shifting the lever.



7 Part circle or full circle operation

The conversion is done simply by rotating the trip lever sideways.



8 Trip stops

Precise setting, easy positioning by hand.

Optimal flexibility for all applications

Innovative drive system Excellent response at any system pressure



Drive system: Powerful efficient stream diffusion



Dispersed jet at the start-up procedure of the gun

Automatic adjustment

Pressure variations and nozzle change are no longer a problem. Manual adjustments are not needed. The innovative drive system adapts its operation automatically to all variations of operating conditions, contributing to the gun's great flexibility. The drive system is mounted on a strong and rigid drive arm.

Slow reverse

The gun's slow, steady rotation with greatly reduced vibration in both directions has the advantage that the carts of reel hose machines stay straight on track and the risk of tip-over is reduced. This smooth operation is

suitable for all irrigation systems, especially as an end gun on center pivots where stress on the end boom is kept to a minimum.

Distribution

The unique drive system allows a better stream diffusion. Over the whole pressure range its operation is excellent. An additional advantage of this drive system is that at the start-up procedure of the gun, the normally compact stream is dispersed into a spray before the gun is set in motion. This greatly reduces furrows and run-off. Because of the Twin's superior distribution close to the gun, spreader nozzles are not needed.



Water distribution even at low system pressure

Dynamic intermittent jet-breaker (optional) Additional stream diffusion



Drive system with dynamic intermittent jet-breaker

Quality of irrigation

With the dynamic intermittent jet-breaker, it's possible to influence the gun's distribution profile and adapt it for different applications at all pressures. Generally the operation of the intermittent jet-breaker increases the stream diffusion and allows a more delicate irrigation for vegetables and sensitive crops. The intermittent jet-breaker is recommended on full circle operation.



Dynamic intermittent jet-breaker in operation

Energy savings

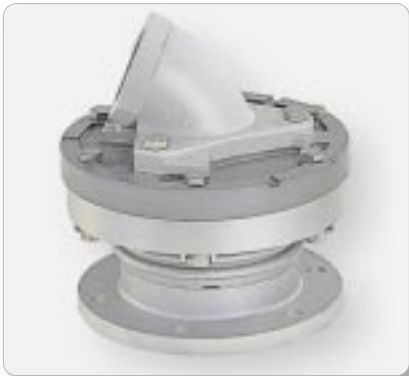
The great versatility of the gun is further increased with the dynamic intermittent jet-breaker. Depending on the crop, it allows operation at lower pressures, still achieving good irrigation results. For this purpose, one or two individually adjustable dynamic jet-breakers can be mounted on the gun's drive arm. The dynamic jet-breaker allows energy saving and reduction of system operating costs by running an irrigation system at lower pressure.



Efficient irrigation with innovative technology

Steady rotation speed for uniform water distribution

Automatic brake system Correct brake force at any system pressure



Automatic brake system, no ball bearings, maintenance free.

Adjustable brake force

The self-adjusting system adapts its brake force to the existing system pressure. The gun therefore achieves a steady rotation speed over its whole nozzle-pressure range. This is essential for uniform water application. The automatic adjusting brake system contributes significantly to the gun's excellent performance over the entire operating range.

No maintenance

The Twin gun is maintenance free. The modern design avoids the use of ball bearings, which can seize at contact with moisture, cause failure and result in expensive repairs. Instead, parts made of high-quality, durable and maintenance-free materials are used. This is a major consideration to keep in mind when choosing a big volume sprinkler.

Vari-Angle[®]

adjustable trajectory angle



Vari-Angle system mandatory
for any big volume sprinkler

The system for more efficient irrigation in windy conditions

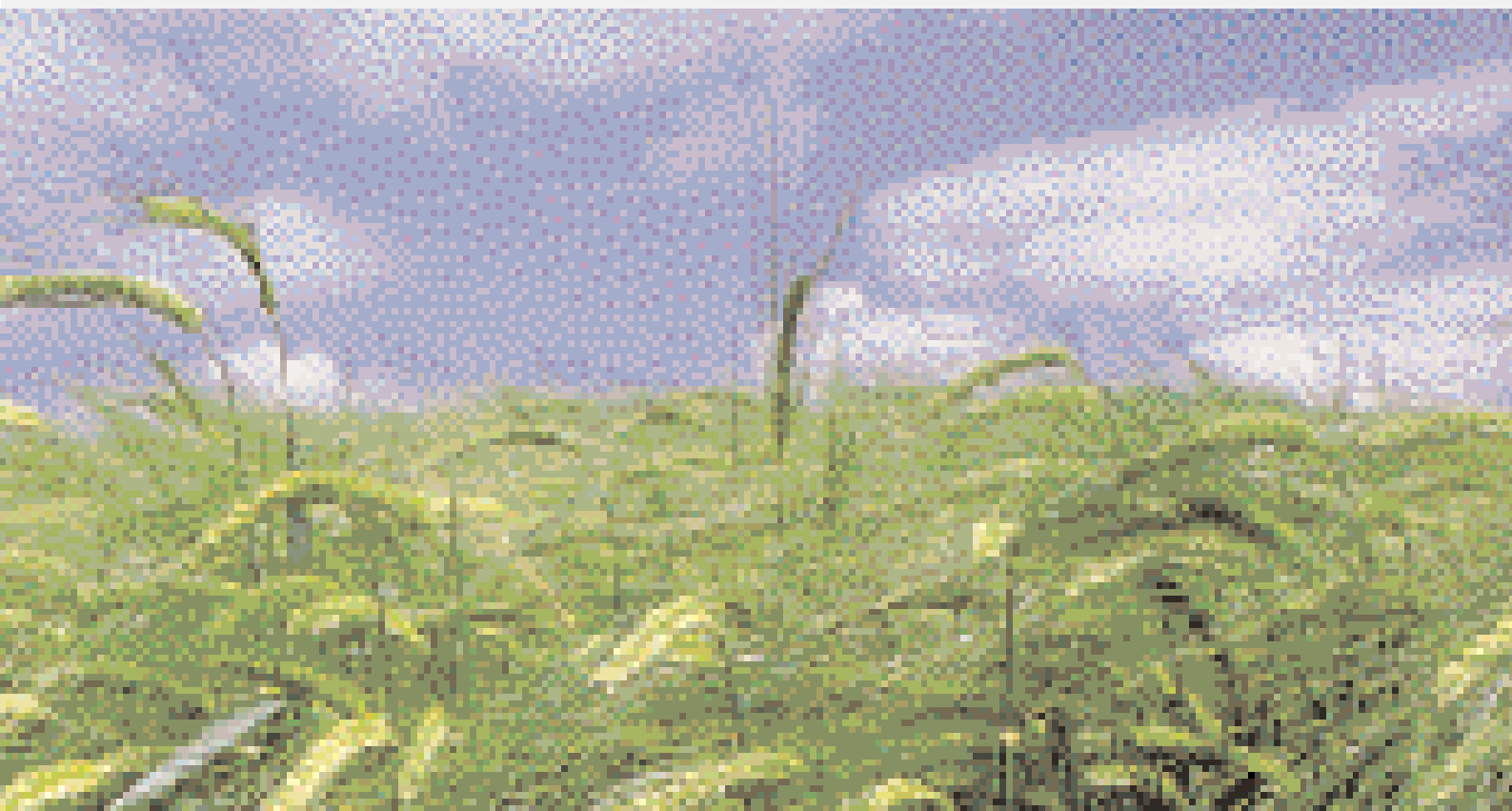
The irrigation efficiency of big volume sprinklers depends principally on existing wind conditions. The trajectory of the stream is one of the most important factors. The lowering of the trajectory in windy conditions reduces water drift, thus significantly improving irrigation efficiency. Also very effective for avoiding obstacles such as power lines.



Trajectory angle 24° & 18°

Trajectory angle

The available standard trajectory angles are 24° and 18°. Trajectory of 21° on request. Should you require a trajectory angle different from the standard, we suggest selecting the Vari-Angle equipped models.



Efficient irrigation with innovative technology

TWIN 101/PLUS



101/PLUS - 24°

Nozzles Ø 12-24 mm / 0,47"-0,94"

AVAILABLE MODELS

Twin 101/PLUS

Trajectory 24°

Full or part circle operation

Flange connection

Twin 101/PLUS Vari-Angle

Trajectory 10°- 28°

Full or part circle operation

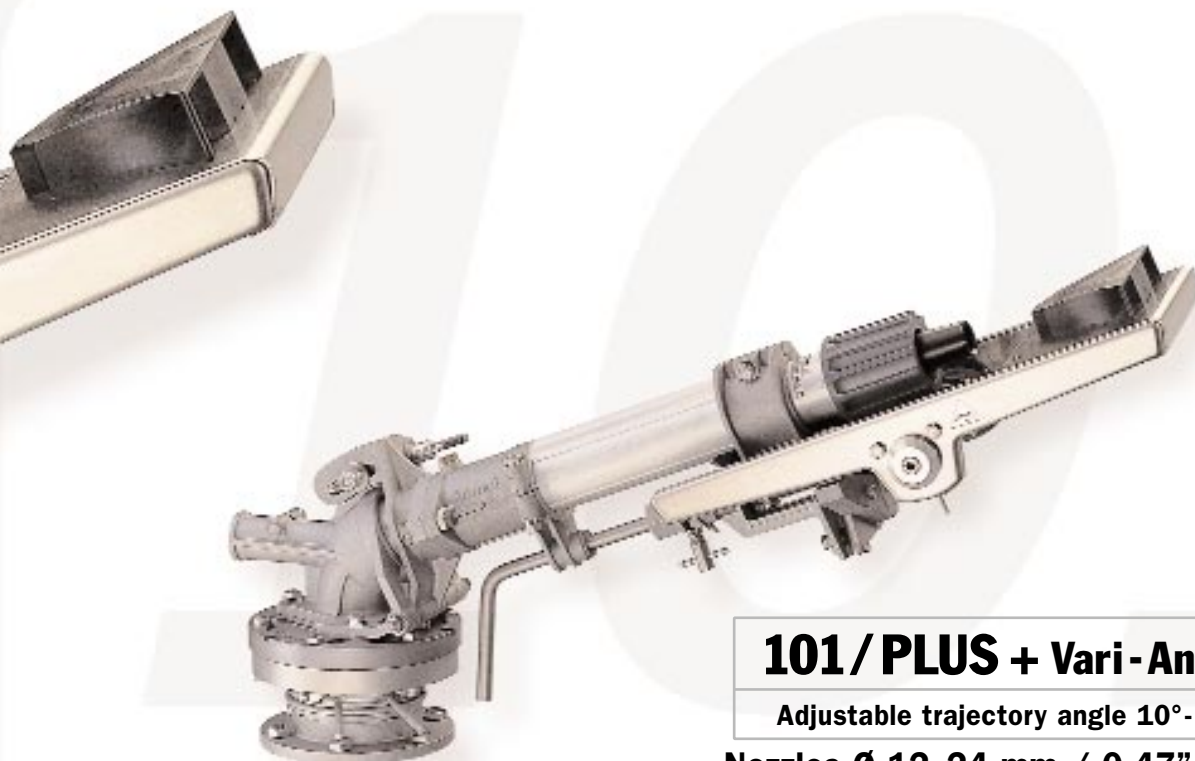
Flange connection

Twin 101/PLUS Pivot

Trajectory 18°

Full or part circle operation

Thread 2" BSP or NPT



101 / PLUS + Vari-Angle®

Adjustable trajectory angle 10°-28°

Nozzles Ø 12-24 mm / 0,47"-0,94"

Twin 101 / PLUS

Taper bore nozzle, 24° Trajectory

Pressure bar	Nozzle 12 mm - 0,47"		Nozzle 14 mm - 0,55"		Nozzle 16 mm - 0,63"		Nozzle 18 mm - 0,71"		Nozzle 20 mm - 0,79"		Nozzle 22 mm - 0,87"		Nozzle 24 mm - 0,94"								
	Flow m³/h	l/s	Flow m³/h	l/s	Flow m³/h	l/s	Flow m³/h	l/s	Flow m³/h	l/s	Flow m³/h	l/s	Flow m³/h	l/s	Radius m						
2,0			10,6	2,96	26,0	13,9	3,86	27,9	17,6	4,89	29,7	21,7	6,04	31,5	26,3	7,30	33,1	31,3	8,69	34,7	
2,5			11,9	3,31	28,3	15,5	4,32	30,4	19,7	5,47	32,4	24,3	6,75	34,3	29,4	8,17	36,1	35,0	9,72	37,8	
3,0	9,6	2,66	27,9	13,0	3,62	30,3	17,0	4,73	32,6	21,6	5,99	34,7	25,6	7,39	36,7	32,2	8,95	38,7	38,3	10,65	40,5
3,5	10,4	2,87	29,5	14,1	3,91	32,1	18,4	5,11	34,5	23,3	6,47	36,8	28,7	7,99	38,9	34,8	9,66	41,0	41,4	11,50	43,0
4,0	11,1	3,07	31,1	15,1	4,18	33,8	19,7	5,46	36,3	24,9	6,91	38,7	30,7	8,54	41,0	37,2	10,33	43,1	44,3	12,29	45,2
4,5	11,7	3,26	32,5	16,0	4,44	35,3	20,9	5,80	38,0	26,4	7,33	40,5	32,6	9,05	42,8	39,4	10,96	45,1	46,9	13,04	47,3
5,0	12,4	3,44	33,8	16,8	4,68	36,8	22,0	6,11	39,5	27,8	7,73	42,1	34,4	9,54	44,6	41,6	11,55	46,9	49,5	13,74	49,2
5,5	13,0	3,60	35,1	17,7	4,91	38,1	23,1	6,41	41,0	29,2	8,11	43,7	36,0	10,01	46,2	43,6	12,11	48,7	51,9	14,42	51,0
6,0	13,6	3,76	36,3	18,4	5,12	39,4	24,1	6,69	42,4	30,5	8,47	45,1	37,6	10,46	47,8	45,5	12,65	50,3	54,2	15,06	52,7
6,5	14,1	3,92	37,4	19,2	5,33	40,6	25,1	6,96	43,6	31,7	8,81	46,5	39,2	10,88	49,3	47,4	13,17	51,9	56,4	15,67	54,4

N.B. The performance data were obtained under ideal testing conditions and may be adversely affected by wind and other factors. Pressure refers to pressure at nozzle. A lowered trajectory angle improves the irrigation efficiency in windy conditions. For every 3° drop of the trajectory angle the throw is reduced by approximately 3 to 4%.

Efficient irrigation with innovative technology

TWIN 140/PLUS



140/PLUS - 24°

Nozzles Ø 16-30 mm / 0,63"-1,18"

AVAILABLE MODELS

Twin 140/PLUS

Trajectory 24°

Full or part circle operation

Flange connection

Twin 140/PLUS Vari-Angle

Trajectory 10° - 28°

Full or part circle operation

Flange connection



140/PLUS + Vari-Angle®

Adjustable trajectory angle 10°-28°

Nozzles Ø 16-30 mm / 0,63"-1,18"

Twin 140/PLUS

Taper bore nozzle, Trajectory 24°

Pressure bar	Nozzle 16 mm - 0,63"			Nozzle 18 mm - 0,71"			Nozzle 20 mm - 0,79"			Nozzle 22 mm - 0,87"			Nozzle 24 mm - 0,94"			Nozzle 26 mm - 1,02"			Nozzle 28 mm - 1,10"			Nozzle 30 mm - 1,18"		
	Flow m³/h	l/s	Radius m	Flow m³/h	l/s	Radius m	Flow m³/h	l/s	Radius m	Flow m³/h	l/s	Radius m	Flow m³/h	l/s	Radius m	Flow m³/h	l/s	Radius m	Flow m³/h	l/s	Radius m	Flow m³/h	l/s	Radius m
2,0	13,9	3,86	27,9	17,6	4,89	29,7	21,7	6,04	31,5	26,3	7,30	33,1	31,3	8,69	34,7	36,7	10,20	36,3	42,6	11,83	37,7	48,9	13,58	39,2
2,5	15,5	4,32	30,4	19,7	5,47	32,4	24,3	6,75	34,3	29,4	8,17	36,1	35,0	9,72	37,8	41,1	11,41	39,5	47,6	13,23	41,1	54,7	15,19	42,6
3,0	17,0	4,73	32,6	21,6	5,99	34,7	25,6	7,39	36,7	32,2	8,95	38,7	38,3	10,65	40,5	45,0	12,49	42,3	52,2	14,49	44,0	59,9	16,63	45,7
3,5	18,4	5,11	34,5	23,3	6,47	36,8	28,7	7,99	38,9	34,8	9,66	41,0	41,4	11,50	43,0	48,6	13,50	44,9	56,3	15,65	46,7	64,7	17,97	48,5
4,0	19,7	5,46	36,3	24,9	6,91	38,7	30,7	8,54	41,0	37,2	10,33	43,1	44,3	12,29	45,2	51,9	14,43	47,2	60,2	16,73	49,1	69,1	19,21	51,0
4,5	20,9	5,80	38,0	26,4	7,33	40,5	32,6	9,05	42,8	39,4	10,96	45,1	46,9	13,04	47,3	55,1	15,30	49,4	63,9	17,75	51,4	73,3	20,37	53,3
5,0	22,0	6,11	39,5	27,8	7,73	42,1	34,4	9,54	44,6	41,6	11,55	46,9	49,5	13,74	49,2	58,1	16,13	51,4	67,3	18,71	53,5	77,3	21,48	55,5
5,5	23,1	6,41	41,0	29,2	8,11	43,7	36,0	10,01	46,2	43,6	12,11	48,7	51,9	14,42	51,0	60,9	16,92	53,3	70,6	19,62	55,4	81,1	22,52	57,5
6,0	24,1	6,69	42,4	30,5	8,47	45,1	37,6	10,46	47,8	45,5	12,65	50,3	54,2	15,06	52,7	63,6	17,61	55,1	73,8	20,49	57,3	84,7	23,52	59,5
6,5	25,1	6,96	43,6	31,7	8,81	46,5	39,2	10,88	49,3	47,4	13,17	51,9	56,4	15,67	54,4	66,2	18,39	56,8	76,8	21,33	59,1	88,1	24,49	61,3
7,0	26,0	7,23	44,9	32,9	9,15	47,9	40,7	11,29	50,7	49,2	13,66	53,3	58,5	16,26	55,9	68,7	19,09	58,4	79,7	22,13	60,8	91,5	25,41	63,1

N.B. The performance data were obtained under ideal testing conditions and may be adversely affected by wind and other factors. Pressure refers to pressure at nozzle. A lowered trajectory angle improves the irrigation efficiency in windy conditions. For every 3° drop of the trajectory angle the throw is reduced by approximately 3 to 4%.

Efficient irrigation with innovative technology

TWIN 160/PLUS



160/PLUS - 24°

Nozzles Ø 20-35 mm / 0,79"-1,38"

AVAILABLE MODELS

Twin 160/PLUS

Trajectory 24°

Full or part circle operation

Flange connection

Twin 160/PLUS Vari-Angle

Trajectory 16° - 28°

Full or part circle operation

Flange connection



160/PLUS + Vari-Angle®

Adjustable trajectory angle 16°-28°

Nozzles Ø 20-35 mm / 0,79"-1,38"

Twin 160/PLUS

Taper bore nozzle, Trajectory 24°

Pressure bar	Nozzle 20 mm - 0,79"			Nozzle 22,5 mm - 0,89"			Nozzle 25 mm - 0,98"			Nozzle 27,5 mm - 1,08"			Nozzle 30 mm - 1,18"			Nozzle 32,5 mm - 1,28"			Nozzle 35 mm - 1,38"		
	Flow m³/h	l/s	Radius m	Flow m³/h	l/s	Radius m	Flow m³/h	l/s	Radius m	Flow m³/h	l/s	Radius m	Flow m³/h	l/s	Radius m	Flow m³/h	l/s	Radius m	Flow m³/h	l/s	Radius m
3,0	26,07	7,24	37,2	32,99	9,16	38,9	40,73	11,31	41,5	49,28	13,69	43,5	58,65	16,29	45,7	68,83	19,12	47,5	79,83	22,17	49,5
3,5	28,16	7,82	41,2	35,63	9,90	43,8	43,99	12,22	46,5	53,32	14,81	48,7	63,35	17,59	51,3	74,35	20,65	53,6	86,22	23,95	56,0
4,0	30,10	8,36	44,2	38,09	10,58	47,3	47,03	13,06	49,9	56,90	15,80	52,5	67,72	18,81	55,2	79,48	22,08	57,9	92,18	25,60	60,2
4,5	31,98	8,87	46,0	40,41	11,22	49,4	49,38	13,85	52,4	60,36	16,76	55,2	71,83	19,95	57,8	84,30	23,42	60,5	97,77	27,16	62,8
5,0	33,65	9,36	47,5	42,59	11,83	51,0	52,58	14,60	54,0	63,62	17,67	57,0	75,72	21,03	60,0	88,86	24,68	62,5	103,06	28,63	64,9
5,5	35,29	9,80	49,0	44,67	12,41	52,5	55,15	15,32	55,4	66,73	18,53	58,5	79,41	22,06	61,5	93,20	25,88	63,9	108,09	30,02	66,3
6,0	36,86	10,24	50,0	46,66	12,96	53,4	57,60	16,00	56,5	69,69	19,36	59,7	82,90	23,05	62,5	97,34	27,04	65,0	112,89	31,36	67,3
6,5	38,37	10,66	50,5	48,56	13,49	54,0	59,95	16,65	57,4	72,54	20,15	60,7	86,33	23,98	63,3	101,32	28,14	65,7	117,50	32,64	68,0
7,0	39,82	11,06	51,1	50,39	14,00	54,6	62,21	17,28	57,9	75,28	20,91	61,3	89,59	24,88	63,9	105,14	29,20	66,2	121,94	33,87	68,5

N.B. The performance data were obtained under ideal testing conditions and may be adversely affected by wind and other factors. Pressure refers to pressure at nozzle. A lowered trajectory angle improves the irrigation efficiency in windy conditions. For every 3° drop of the trajectory angle the throw is reduced by approximately 3 to 4%.

Efficient irrigation with innovative technology

TWIN 202/PLUS



202/PLUS - 24°

Nozzles Ø 20-40 mm / 0,79"-1,58"

AVAILABLE MODELS

Twin 202/PLUS

Trajectory 24°

Full or part circle operation

Flange connection

Twin 202/PLUS Vari-Angle

Trajectory 16° - 28°

Full or part circle operation

Flange connection



202/PLUS + Vari-Angle®

Adjustable trajectory angle 16°- 28°

Nozzles Ø 20-40 mm / 0,79"- 1,58"

Twin 202/PLUS

Taper bore nozzle, Trajectory 24°

Pressure bar	Nozzle 20 mm - 0,79"			Nozzle 22,5 mm - 0,89"			Nozzle 25 mm - 0,98"			Nozzle 27,5 mm - 1,08"			Nozzle 30 mm - 1,18"			Nozzle 32,5 mm - 1,28"			Nozzle 35 mm - 1,38"			Nozzle 37,5 mm - 1,48"			Nozzle 40 mm - 1,58"		
	Flow m³/h	l/s	Radius m	Flow m³/h	l/s	Radius m	Flow m³/h	l/s	Radius m	Flow m³/h	l/s	Radius m	Flow m³/h	l/s	Radius m	Flow m³/h	l/s	Radius m	Flow m³/h	l/s	Radius m	Flow m³/h	l/s	Radius m	Flow m³/h	l/s	Radius m
3,0	26,07	7,24	37,2	32,99	9,16	38,9	40,73	11,31	41,5	49,28	13,69	43,5	58,65	16,29	45,7	68,83	19,12	47,5	79,83	22,17	49,5	91,64	25,46	50,7	104,27	28,96	52,3
3,5	28,16	7,82	41,4	35,63	9,90	43,8	43,99	12,22	46,5	53,32	14,81	48,7	63,35	17,59	51,3	74,35	20,65	53,6	86,22	23,95	56,0	98,98	27,50	57,8	112,27	31,28	59,5
4,0	30,10	8,36	44,2	38,09	10,58	47,3	47,03	13,06	49,9	56,90	15,80	52,5	67,72	18,81	55,2	79,48	22,08	57,9	92,18	25,60	60,2	105,82	29,39	62,1	120,40	33,44	64,2
4,5	31,98	8,87	46,0	40,41	11,22	49,4	49,38	13,85	52,4	60,36	16,76	55,2	71,83	19,95	57,8	84,30	23,42	60,5	97,77	27,16	62,8	112,24	31,18	64,9	127,70	35,47	67,0
5,0	33,65	9,36	47,5	42,59	11,83	51,0	52,58	14,60	54,0	63,62	17,67	57,0	75,72	21,03	60,0	88,86	24,68	62,5	103,06	28,63	64,9	118,31	32,86	66,8	134,61	37,39	68,6
5,5	35,29	9,80	49,0	44,67	12,41	52,5	55,15	15,32	55,4	66,73	18,53	58,5	79,41	22,06	61,5	93,20	25,88	63,9	108,09	30,02	66,3	124,08	34,47	68,3	141,18	39,22	69,7
6,0	36,86	10,24	50,0	46,66	12,96	53,4	57,60	16,00	56,5	69,69	19,36	59,7	82,90	23,05	62,5	97,34	27,04	65,0	112,89	31,36	67,3	129,60	36,00	69,2	147,46	40,96	70,5
6,5	38,37	10,66	50,5	48,56	13,49	54,0	59,95	16,65	57,4	72,54	20,15	60,7	86,33	23,98	63,3	101,32	28,14	65,7	117,50	32,64	68,0	134,89	37,47	69,9	153,48	42,63	71,2
7,0	39,82	11,06	51,1	50,39	14,00	54,6	62,21	17,28	57,9	75,28	20,91	61,3	89,59	24,88	63,9	105,14	29,20	66,2	121,94	33,87	68,5	139,98	38,88	70,5	159,27	44,24	71,8

N.B. The performance data were obtained under ideal testing conditions and may be adversely affected by wind and other factors. Pressure refers to pressure at nozzle. A lowered trajectory angle improves the irrigation efficiency in windy conditions. For every 3° drop of the trajectory angle the throw is reduced by approximately 3 to 4%.

Efficient irrigation with innovative technology

Performance Data - US Units

Twin 101/PLUS

Taper bore nozzle – 24° Trajectory

PSI	Nozzle 0,47"		Nozzle 0,55"		Nozzle 0,63"		Nozzle 0,71"		Nozzle 0,79"		Nozzle 0,87"		Nozzle 0,94"	
	GPM	DIA.	GPM	DIA.	GPM	DIA.	GPM	DIA.	GPM	DIA.	GPM	DIA.	GPM	DIA.
30			48	187'	62	201'	79	217'	97	232'	118	247'	140	260'
40	40	183'	55	203'	72	220'	91	234'	112	250'	136	265'	162	279'
50	45	197'	62	215'	80	232'	102	250'	125	267'	152	283'	181	300'
60	50	212'	67	230'	88	247'	111	266'	138	282'	167	298'	198	315'
70	54	225'	73	244'	95	262'	120	280'	149	297'	180	314'	214	323'
80	57	237'	78	257'	102	276'	129	294'	159	312'	192	329'	229	344'
90	61	248'	83	269'	108	289'	137	308'	169	326'	204	343'	243	359'
100	64	257'	87	280'	114	300'	144	320'	178	339'	215	357'	256	374'
110	67	265'	91	290'	119	310'	151	331'	186	351'	225	369'	268	388'

Twin 140/PLUS

Taper bore nozzle – 24° Trajectory

PSI	Nozzle 0,63"		Nozzle 0,71"		Nozzle 0,79"		Nozzle 0,87"		Nozzle 0,94"		Nozzle 1,02"		Nozzle 1,10"		Nozzle 1,18"	
	GPM	DIA.	GPM	DIA.	GPM	DIA.	GPM	DIA.	GPM	DIA.	GPM	DIA.	GPM	DIA.	GPM	DIA.
30	62	201'	79	217'	97	232'	118	247'	140	260'	164	275'	191	286'	219	300'
40	72	220'	91	234'	112	250'	136	265'	162	279'	190	293'	220	307'	253	318'
50	80	232'	102	250'	125	267'	152	283'	181	300'	212	315'	246	330'	283	343'
60	88	247'	111	266'	138	282'	167	298'	198	315'	233	331'	270	347'	310	360'
70	95	262'	120	280'	149	297'	180	314'	214	323'	251	347'	291	362'	334	376'
80	102	276'	129	294'	159	312'	192	329'	229	344'	269	361'	311	376'	358	391'
90	108	289'	137	308'	169	326'	204	343'	243	359'	285	376'	330	392'	379	407'
100	114	300'	144	320'	178	339'	215	357'	256	374'	300	390'	348	407'	400	422'
110	119	310'	151	331'	186	351'	225	369'	268	388'	315	404'	365	421'	419	437'
120	125	318'	158	341'	195	362'	235	380'	280	400'	329	416'	381	432'	437	448'

Twin 160/PLUS

Taper bore nozzle – 24° Trajectory

PSI	Nozzle 0,79"		Nozzle 0,89"		Nozzle 0,98"		Nozzle 1,08"		Nozzle 1,18"		Nozzle 1,28"		Nozzle 1,38"	
	GPM	DIA.	GPM	DIA.	GPM	DIA.	GPM	DIA.	GPM	DIA.	GPM	DIA.	GPM	DIA.
40	110	229'	139	239'	172	254'	208	268'	248	279'	291	291'	337	301'
50	123	269'	156	284'	192	302'	233	317'	277	333'	325	348'	377	364'
60	135	294'	171	315'	211	334'	255	350'	303	367'	356	386'	413	401'
70	146	308'	184	332'	227	350'	275	371'	328	390'	384	407'	446	422'
80	156	321'	197	345'	243	364'	294	384'	350	404'	411	421'	476	436'
90	165	329'	209	352'	258	374'	312	395'	371	413'	436	429'	506	444'
100	174	334'	220	357'	272	379'	329	401'	392	418'	459	434'	533	450'
110	182	336'	231	359'	285	382'	345	404'	411	421'	482	438'	559	453'
120	191	339'	241	363'	298	385'	360	407'	429	424'	503	442'	584	456'

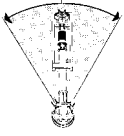
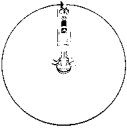
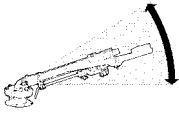
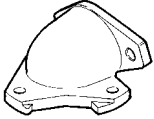
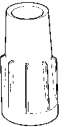
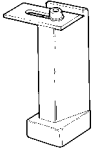

Twin 202/PLUS

Taper bore nozzle – 24° Trajectory

PSI	Nozzle 0,79"		Nozzle 0,89"		Nozzle 0,98"		Nozzle 1,08"		Nozzle 1,18"		Nozzle 1,28"		Nozzle 1,38"		Nozzle 1,48"		Nozzle 1,58"	
	GPM	DIA.	GPM	DIA.	GPM	DIA.	GPM	DIA.	GPM	DIA.	GPM	DIA.	GPM	DIA.	GPM	DIA.	GPM	DIA.
40	110	229'	139	239'	172	254'	208	268'	248	279'	291	291'	337	301'	387	309'	440	319'
50	123	269'	156	284'	192	302'	233	317'	277	333'	325	348'	377	364'	433	377'	492	388'
60	135	294'	171	315'	211	334'	255	350'	303	367'	356	386'	413	401'	474	414'	539	427'
70	146	308'	184	332'	227	350'	275	371'	328	390'	384	407'	446	422'	512	435'	582	447'
80	156	321'	197	345'	243	364'	294	384'	350	404'	411	421'	476	436'	547	450'	622	458'
90	165	329'	209	352'	258	374'	312	395'	371	413'	436	429'	506	444'	580	457'	660	465'
100	174	334'	220	357'	272	379'	329	401'	392	418'	459	434'	533	450'	612	461'	696	470'
110	182	336'	231	359'	285	382'	345	404'	411	421'	482	438'	559	453'	642	465'	730	473'
120	191	339'	241	363'	298	385'	360	407'	429	424'	503	442'	584	456'	670	469'	762	476'

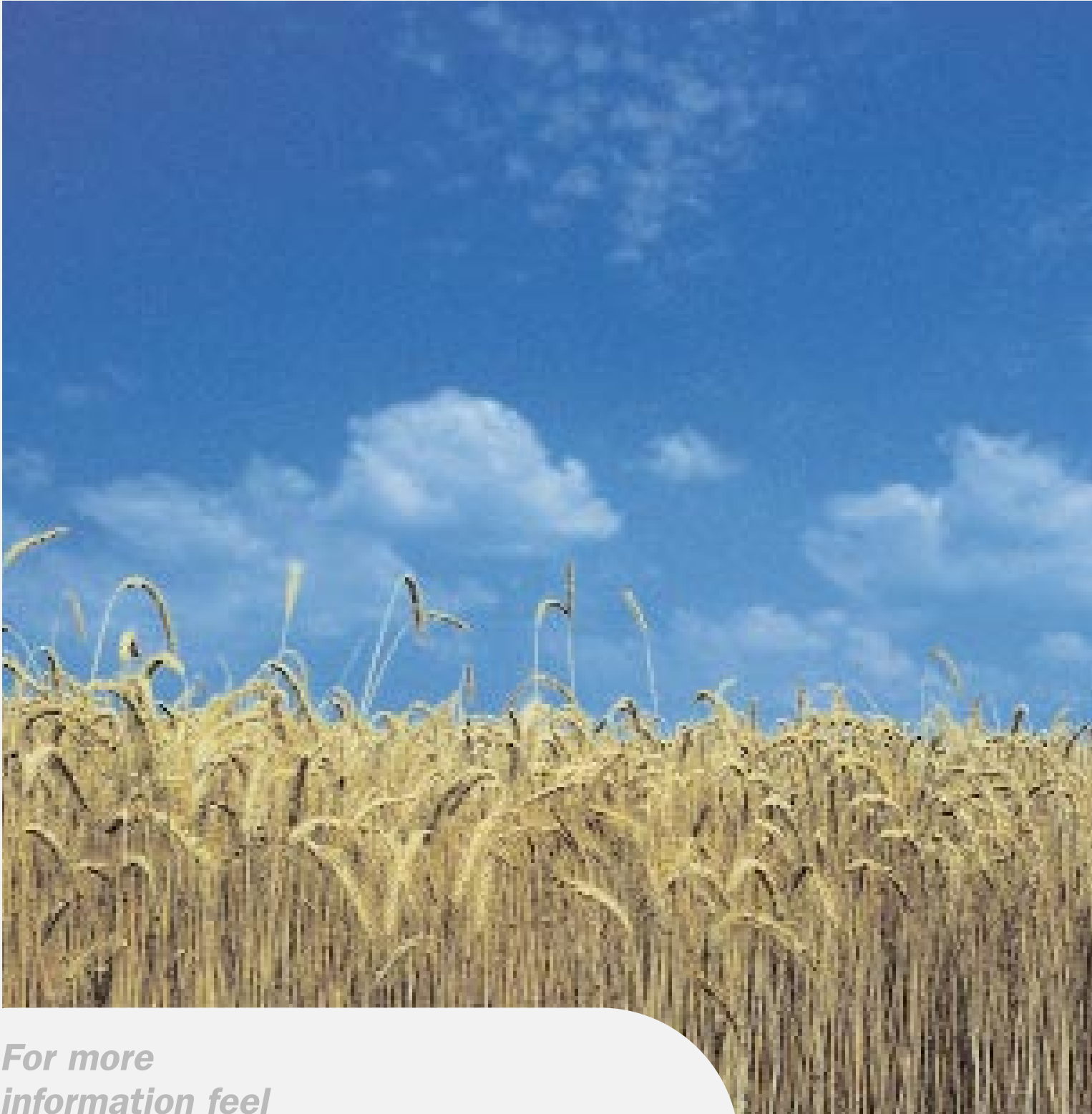
N.B. The performance data were obtained under ideal testing conditions and may be adversely affected by wind and other factors. Pressure refers to pressure at nozzle. A lowered trajectory angle improves the irrigation efficiency in windy conditions. For every 3° drop of the trajectory angle the throw is reduced by approximately 3 to 4%.

Options

		Twin 101	Twin 140	Twin 160	Twin 202
	Part circle gun	available	available	available	available
	Full circle gun	available	on request	available	on request
	Vari-Angle®	adjustable trajectory angle 10°-28°	adjustable trajectory angle 10°-28°	adjustable trajectory angle 16°-28°	adjustable trajectory angle 16°-28°
	Trajectory	24°/18°	24°	24°	24°
	Taper bore nozzles	7 nozzles Ø 12-24 mm 0,47"-0,94"	8 nozzles Ø 16-30 mm 0,63"-1,18"	7 nozzles Ø 20-35 mm 0,79"-1,38"	9 nozzles Ø 20-40 mm 0,79"-1,58"
	Dynamic intermittent jet-breaker	1 jet-breaker or 2 jet-breakers	1 jet-breaker or 2 jet-breakers	1 jet-breaker or 2 jet-breakers	1 jet-breaker or 2 jet-breakers
	Connections	Flange * 2" NPTF Thread 2" BSPF Thread	Flange *	Flange *	Flange *

*** Flange, standard on all models:**

External Ø 154 mm, 6 holes Ø 10.5 mm on pitch circle Ø 130 mm
external Ø 6 1/16", 6 holes Ø 13/32" on pitch circle Ø 5 1/8".



*For more
information feel
free to contact us*

TWIN

Technical innovation
is our challenge.
The advantage for the user
is our goal.™

LIMITED WARRANTY AND DISCLAIMER

The following constitutes the full and complete limited warranty provided by Komet Irrco in relation to its products. This limited warranty is in lieu of any and all other representations or warranties, express or implied, including, but not limited to, any implied warranties of merchantability or fitness for particular purpose, arising from statute, common law, custom, course of dealing, trade use, or otherwise. No person or entity is authorized to incur or assume for Komet Irrco any other expense, obligation or duty as to products designed, manufactured and/or distributed to Komet Irrco.

This limited warranty does not apply to any Komet Irrco product that has been repaired, modified or altered in any way, nor does it apply to any Komet Irrco product that has been misused, damaged or operated contrary to working specifications and instructions.

Komet Irrco shall not be liable for any crop damage or consequential or incidental damages resulting from the use of Komet Irrco products. Komet Irrco makes no warranty with respect to products manufactured by others to which or with which Komet Irrco's products are attached or used. Komet Irrco reserves the right to redesign, alter or modify its products without incurring liability for any inventory of products that subsequently becomes obsolete.

All products distributed by Komet Irrco are warranted to be free of defects in material and workmanship for a period of one year from the date of the product's original shipment. Normal wear and tear arising from operation, damages due to improper or inadequate maintenance, and damages due to exposure to an electrolytical or chemical process are specifically excluded from this warranty.

If a product is suspected of failure under terms of this limited warranty, the suspected failure must be reported in writing to Komet Irrco within sixty (60) days. An authorization may then be issued by Komet Irrco to return the product, shipping charges prepaid, for inspection. The exclusive and sole remedy with respect to the above provisions is expressly limited to the repair or replacement, at the sole discretion of Komet Irrco, of the Komet Irrco product involved. Komet Irrco hereby expressly disclaims any obligation for costs arising from the repair or replacement of Komet Irrco products made by anyone other than authorized Komet Irrco personnel.



Komet Irrco s.r.l. I-38014 Gardolo/TN tel. (+39) 0461 990138 fax (+39) 0461 990201
web: www.kometirrigation.com e-mail: komet@kometirrigation.com